

Stricker
Gummitechnologie

MANUWELL

BELTS WITH CORRUGATED EDGES FOR STEEP-ANGLE
AND VERTICAL CONVEYING OF BULK MATERIALS



HIGH SYSTEM
AVAILABILITY



Special designs on request!

MANUWELL CONVEYOR BELTS

Versatile use on all transport routes with a slope of 0 to 90 °

Whether for light, medium or heavy equipment – manuwell conveyor belts are characterized by high flexibility. They are suitable for all lines and even allow steep-angle conveyance with a gradient angle of 90 °.

This is made possible by a precise coordination of belt body, corrugated edge profile and carrier profile, which Stricker plans and develops within the framework of the design calculation according to your individual requirements. As individual as the planning is, is also the manufacture and assembly of the manuwell conveyor belts. They are manufactured to customer specifications and assembled on-site by a Stricker team or Germany-wide competent partnerst.



normal belt body



laterally stiff belt body

ADVANTAGES

- customer-specific design
- high flexibility
- low energy consumption
- low-noise
- low-maintenance
- durable
- low space requirement

MANUWELL BELT BODY

Long service life due to extremely robust plies

The special belt body consists of tension members, plies made of polyester/polyamide or steel cable and are equipped with a reinforcement transverse to the direction of movement. Among other things, this prevents knocking of the profiles against the lower trough, and allows implementation of different gradient angles without difficulty. The manuwell conveyor belts impress by long service life and low energy consumption.

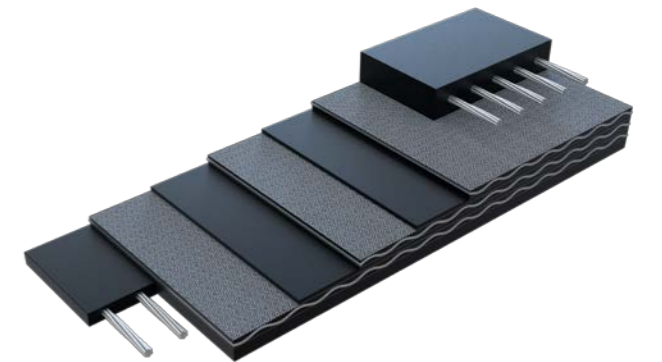
Cover plates are wear-resistant in accordance with the applications.

Specifications

- Type "XE", laterally stiff due to textile transverse reinforcement
- Type "XSC", particularly laterally stiff due to steel cable transverse reinforcement



Type "XE"



Type "XSC"

TECHNICAL SPECIFICATIONS

Type XE	Rubber cover mm	Thickness mm	Equipment
250/2	2:2	7.5	light/medium
315/2	3:2	9.0*	light/medium
400/3	4:2	10.5*	medium/heavy
500/3	4:2	11.5*	medium/heavy
630/4	4:2	12.0	medium/heavy
800/5	4:2	13.0	medium/heavy
Type XSC	Rubber cover mm	Thickness mm	Equipment
315/2+2	2:2	9.5	medium/heavy
500/3+2	3:2	11.0*	medium/heavy
630/4+2	4:2	13.0	medium/heavy

* Stock material – subject to prior sale. Special designs on request.

MANUWELL CORRUGATED EDGES

In cut-resistant, elastic quality

Our corrugated edges provide high stability due to their lateral reinforcement. From 120 mm height they are available with fabric reinforcement in the version "G".



TECHNICAL DATA

Type	H mm	FW mm	Recommended min. drum diameter
WK 40	40	35/50	120 mm
WK 60	60	50	150 mm
WK 80	80	50	200 mm
WK 100	100	50	250 mm
WK 120	120	50	300 mm
WK 140	140	50	350 mm
WK 120 G	120	75	300 mm
WK 140 G	140	75	350 mm
WK 160 G	160	75	400 mm
WK 200 G	200	75	500 mm
WK 250 G	240	75	625 mm
WK 300 G	300	100	750 mm
WK 400 G	400	100	1200 mm

Larger drum diameters increase the service life. Belt bodies and profiles as well as short axle spacing can necessitate larger drum diameters.

MANUWELL CARRIER PROFILES

In cut-resistant, abrasion-resistant quality

With our wide range of different carrier profiles we enable optimal conveying of your bulk materials.

The carrier profiles of the types "T" and "TGS" can be laterally bolted to the sidewalls, which results in an additional stabilisation.

Carrier profiles and corrugated edges are connected to the base belt using the proven cold vulcanisation process with automatic pressure devices.

On request we can produce special profiles for different areas of application.

Specifications

- Type "T", straight
- Type "TS", slanted
- Type "TGS", cranked

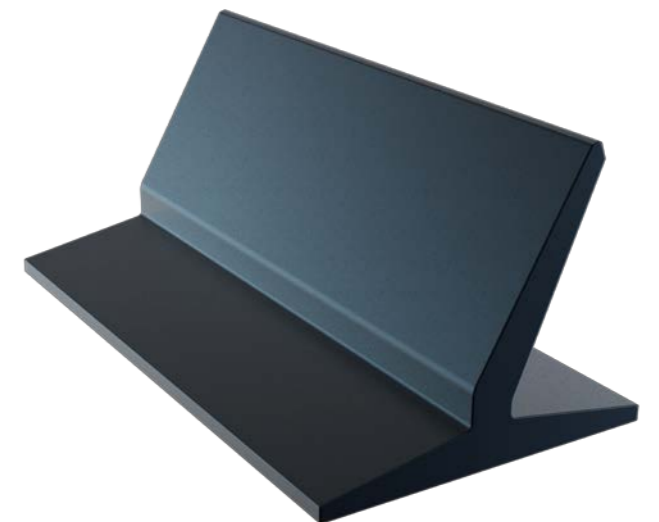
TECHNICAL DATA

Type T	Type TS	Type TGS
T 35	TS 35	TGS 75
T 55	TS 55	TGS 110
T 75	TS 75	TGS 140*
T 90	TS 90	TGS 180*
T 110*	TS 110	TGS 220*
T 140*	TS 140	TGS 260**
T 180*	TS 180	TGS 280**
		TGS 360**

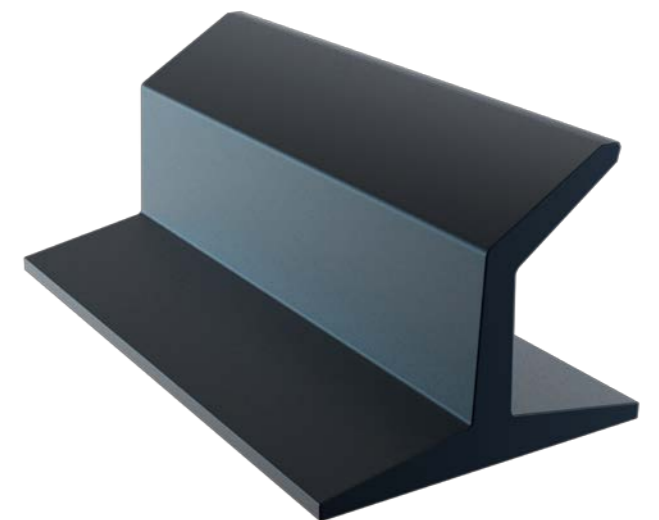
* available with fabric reinforcement
** with fabric reinforcement



Type "T", straight



Type "TS", slanted



Type "TGS", cranked

DEVELOPMENT AND DESIGN

First-class products and customized solutions

Stricker is a reliable partner when it comes to planning, developing and designing belts with corrugated edges for steep and vertical conveying to your needs. Our aim is to continually optimize your production facilities and to significantly increase their service life.

Experienced engineers and technicians create system-specific performance calculations and adapt the conveyor belts to meet your individual requirements – for example through specific heights of the corrugated edges, a proper arrangement and shaping of the carrier profiles and a tailor-made design of the belts.

But before we start with all this, we will carefully examine your existing belts with corrugated edges. In this way, we create a common basis for a clear and trust-based optimization process.



24h-SERVICE
+49 251 3288-0



ASSEMBLY AND SERVICE

We are available to service you 365 days of the year

To ensure your conveyors systems are always ready for use, you can rely on us day by day and around the clock.

We or our partner in your area are happy to provide continuous curing of your conveyor belts. Our maintenance contracts assure optimum availability of your production facilities at low operating costs.

Whether you require products, consultation or service – find out about our quality. Give us a call, or write us. We are always here to help.

WE – THE TEAM OF STRICKER – STAND FOR:

- professional consultation
- high-performance and innovative products
- individual solutions
- high quality and durable materials
- on-time delivery
- reliable assembly and maintenance

WE WOULD BE HAPPY TO ADVISE YOU

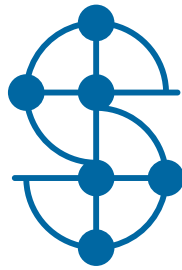
Our staffs are available at all times for your individual questions and projects.



Stricker GmbH und Co. KG
An der Kleimannbrücke 4
48157 Münster

Phone: +49 251 3288-0
Fax: +49 251 3288-129
gummi@stricker.ms

www.stricker.ms/en/gummi/conveyor_technology/rubber_conveyor_belts/sidewall_belts



Stricker

Gummittechnologie

Stricker GmbH und Co. KG
An der Kleimannbrücke 4
48157 Münster

Phone: +49 251 3288-0

Fax: +49 251 3288-129

gummi@stricker.ms

www.stricker.ms

