

Stricker
Torsysteme

AERO LOGISTICS

THE INNOVATIVE AIR CURTAIN SYSTEM FOR WAREHOUSE & LOGISTICS



AERO LOGISTICS

Innovative air curtain system specifically for the logistics industry

The new AERO logistics air curtain system by Stricker was designed specifically for the needs of logistics companies and therefore provides an innovative and economic alternative to conventional docking stations.

Previous solutions – costly and prone to failure

To date, docking of trucks and transport vehicles to door openings of warehouses often results in costly damage to loading bridges. High service and maintenance costs are the result.

Coincidentally, the sealing quality of docking stations is far from satisfactory. The approximately 50-60 cm deep gaps between vehicle and door openings allow cold outside air to flow freely into the hall. This causes permanently high energy losses and endangers the health of employees.

AERO Logistics – the industry solution of the future

With the use of AERO logistics, these problems have become a thing of the past. Installed on the inside of the hall, the air curtain system effectively counteracts the influx of cold air – and virtually has no transport damages, cold drafts and energy losses.

In that way, you will not reduce high expenses for continuous repairs. Due to its outstanding air curtain characteristics, our proven energy-efficient AERO system with the patented pressure chamber nozzle system achieves maximum screening performance. Thus, you can realize significant energy savings and permanently reduce your operating costs. At the same time, the working conditions for your employees near the door openings improve, so that absence for health reasons can be reduced.

Already at the preliminary stage of each project, we create a profitability analysis, which provides realistic figures in terms of energy savings, operational, personnel and maintenance costs.

ADVANTAGES

barrier-free arrival and departure

system that is much less prone to failure, virtually all transport damages to mechanical components are avoided

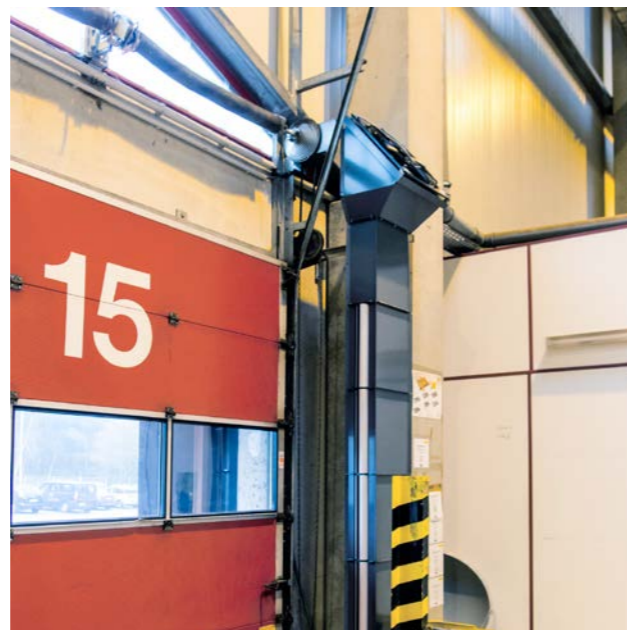
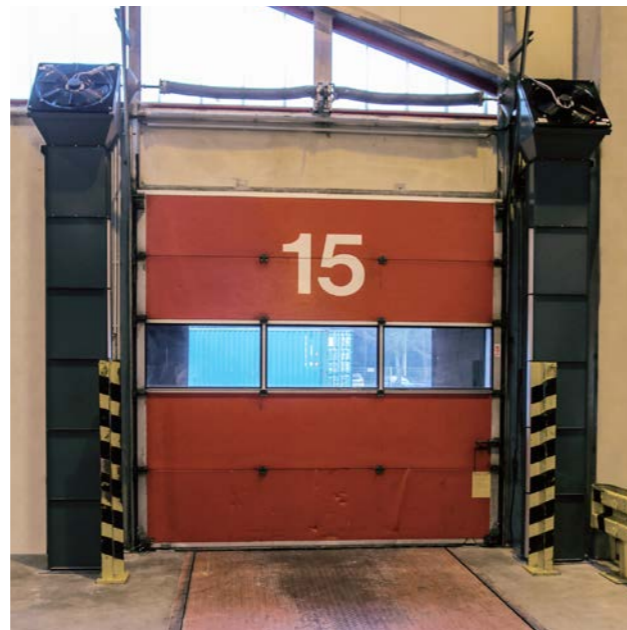
lower service and maintenance costs

economic system adapted to the needs of the logistics industry

improving working conditions and increasing employee satisfaction

reduction of sickness absence rate

energy savings and reduction of operating costs



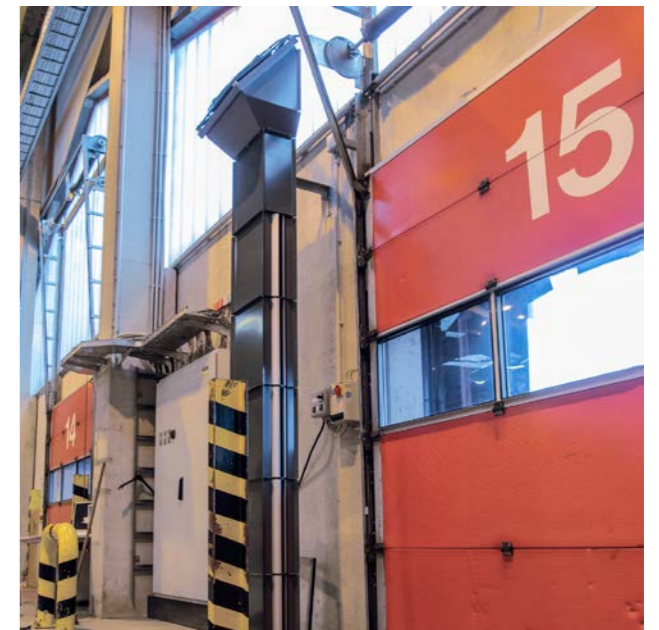
FUNCTIONING AND TECHNICAL DETAILS

Robust, effective and easy to use

The ventilation columns of the AERO air curtain systems are installed as upright recirculating air model on both sides left and right of the door openings behind existing sectional doors. AERO Logistics is controlled and regulated via the door control. As soon as the door opens, the blowers are switched on.

The air intake occurs by means of high-performance axial fans from the upper area of the hall. Subsequently the warm air is directed against the incoming cold air at an adjustable air outlet angle of 60° through a ventilation duct and our patented nozzle system.

- Effective air flow: 2,400 m³/h
- Air curtain velocity: 8 m/s
- Electrical connection of fans: 400 V / 0.785 KW / 1.5 A / 50-60 Hz
- Dimensions (W x H x D): 3,660 mm x 454 mm x 550 mm
- Weight: 35 kg
- Protection Class: IP 54
- 1 control unit DST 2 – H-0-A
- 3-phase speed controller 400 V, integrated in a plastic housing
- Protection class IP 44 with 2-position switch, manual-0-automatic-switch for door contact connector, indicator light, touch protected screw connection, full motor protection

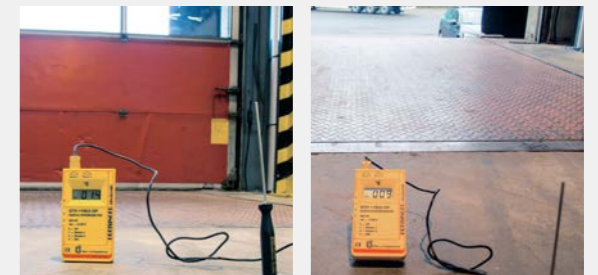


TEST FACILITY CONVINCES MANAGEMENT AND STAFF

Impressive test results demonstrate effectiveness

Measurements in our test facility at a large logistics company have demonstrated: In addition to the positive feedback from staff and management, also the test results generated enthusiasm.

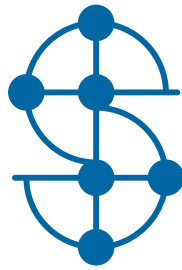
While the indoor temperature (3 meters distant from the door) without air wall with a cold air inflow velocity of 1.2 m/sec to 1.9 m/sec cooled down from 14 °C to 8 °C after only two minutes, with the air curtain system switched-on, the temperature remained constant between 12 °C to 16 °C for a period of 15 minutes. The inflow velocity decreased at the same time up to 0.4 m/sec.



Measurement of indoor temperature and inflow velocity of the cold air



Measurement of the noise level at full load with the air curtain system running



Stricker

Torsysteme

Stricker GmbH und Co. KG
An der Kleimannbrücke 4
48157 Münster, Germany

Phone: +49 251 3288-0

Fax: +49 251 3288-174

torsysteme@stricker.ms

www.stricker.ms

